

To order:

Mail the enclosed postage-paid order card

Call: (800) 300-9868 • (609) 654-6266

Fax: (609) 654-4309

Email: custserv@infotoday.com

Web: www.infotoday.com

Save With a Standing Order!

You'll receive 10% off with a First-Time Standing Order and 5% off future editions, shipped to you immediately upon publication for your convenience. You can cancel your order at any time with no further obligation.



Annual Register of Grant Support™ 2010 is the definitive directory of funding sources for scholars, researchers, educators, civic groups, libraries, arts organizations, hospitals, and other institutions or individuals who rely on outside financial support.

Annual Register of Grant Support™ 2010

September 2009/c. 1,300 pp/hardbound

ISBN 978-1-57387-354-3

\$259

(Add \$20 per book for shipping and handling.)

GRANT SUPPORT 2010

Also available from Information Today, Inc.

Foundation Reporter, 41st Edition

Comprehensive Profiles & Giving Analysis of America's Major Private Foundations

Known throughout the fundraising community for its depth and content, *Foundation Reporter* gives you all the important contact, financial, and grant information you'll need. This comprehensive resource covers the top 1,000 private foundations in the U.S. that have at least \$10 million in assets or whose annual giving totals \$500,000 or more. *Foundation Reporter* helps you build a targeted, well-researched, well-planned campaign to increase your foundation support by thousands of dollars. 2,100 pp/hardbound. **\$595.** (Add \$20 for shipping and handling.) ISBN 978-1-57387-358-1



Corporate Giving Directory, 31st Edition

Comprehensive Profiles of America's Major Corporate Foundations & Corporate Giving Programs

Now you can identify valuable links and contacts between your organization's leaders and trustees, donors, officers, and directors of corporate foundations. This handy reference provides complete profiles of the 1,000 largest corporate foundations and corporate direct-giving programs in the U.S., the funding sources that represent nearly \$6 billion in cash and nonmonetary support annually. Help your nonprofit organization gain a crucial edge as corporate philanthropy budgets tighten. 1,650 pp/hardbound. **\$625.** (Add \$20 for shipping and handling.) ISBN 978-1-57387-359-8



For more information

Phone Lauri Rimler at (908) 219-0088 or email her at lwrimler@infotoday.com.



Information Today, Inc.

143 Old Marlton Pike • Medford, NJ 08055

Phone: (800) 300-9868 or (609) 654-6266

Fax: (609) 654-4309

Web: www.infotoday.com



Gain a Competitive Edge

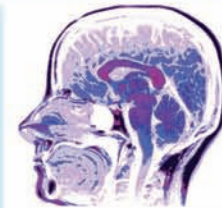
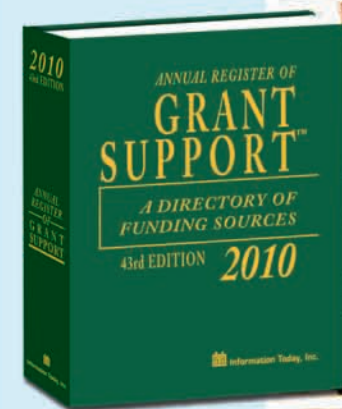
with more than 3,100 funding programs

GRANT SUPPORT

Literally millions of dollars in grant awards are waiting to be claimed if you and your patrons know where, how, and when to apply for them!

Annual Register of GRANT SUPPORT™

2010



Information Today, Inc.

Tap into the financial support you need!

“A literal ‘gold mine’ for any organization that depends upon nonrepayable support for the continuation of its programs.”

—Art Times

Entry information includes the following:

- Foundation name
- Address
- Phone and fax numbers
- Email address and website
- Year founded
- Areas of interest
- Name of program(s)
- Type of grants offered
- Purpose
- Type of foundation
- Eligibility requirements
- Geographic restrictions
- Size of financial awards
- Number of applicants
- Number of awards
- Representative awards
- Application information
- Duration of grant
- Deadlines for applications
- Publications
- Trustees and officers
- Total amount of annual support
- Staff
- And more—up to 31 categories of entry information are covered.

Everything you need to know about each grant program

The *Annual Register of Grant Support*™ 2010 answers all the vital questions about each grant program and the support it provides, including:

- 1 **Who gives it?** You'll find background information on every organization, including founding date, address, publications, key personnel, and a description of its key areas of interest.
- 2 **Who gets it?** Profiles define what types of projects are typically funded, qualification requirements, geographical limitations, and other contingencies that may affect eligibility.
- 3 **What is given?** Details include total grant budget, monetary size of typical grants, number of grants awarded annually, and representative awards from previous years.
- 4 **What is the duration?** You'll discover the length of grants (one-time, annual, multiyear) as well as renewal information if applicable.
- 5 **How does one apply?** Listings outline application procedures, deadlines, contacts, and any other application materials or information.

Grant programs are arranged by topic and cross-referenced by subject area—with **61 specific subcategories.**

Each listing includes information on **eligibility requirements** and **restrictions**, **application procedures** and **deadlines**, **grant size** or **range**, and **contact information.**

GRANT SUPPORT 2010

Now in the completely updated 43rd edition, this acclaimed resource profiles more than 3,100 programs that distribute funding and awards annually for the following:

- Fellowships and study grants
- Medical and scientific research
- Social research and programs
- The arts and humanities
- Civic improvements
- Community service groups
- Programs for foreign scholars
- Library and school grants
- Educational outreach programs
- Healthcare and hospital projects
- Programs for women, minorities, and seniors
- Construction grants
- Crime prevention programs
- And so much more!

PROPOSAL-WRITING TIPS

You'll also find expert proposal-writing guidelines and examples to help even first-time applicants prepare program plans and grant proposals that will yield professional results.

From small contributions for local civic groups to million-dollar school construction grants, the funding programs found in the *Annual Register of Grant Support*™ 2010 will help millions of recipients realize their goals.

To order: call (800) 300-9868 or (609) 654-6266 • Reserve your copy today!

For more information, contact Lauri Rimler at (908) 219-0088